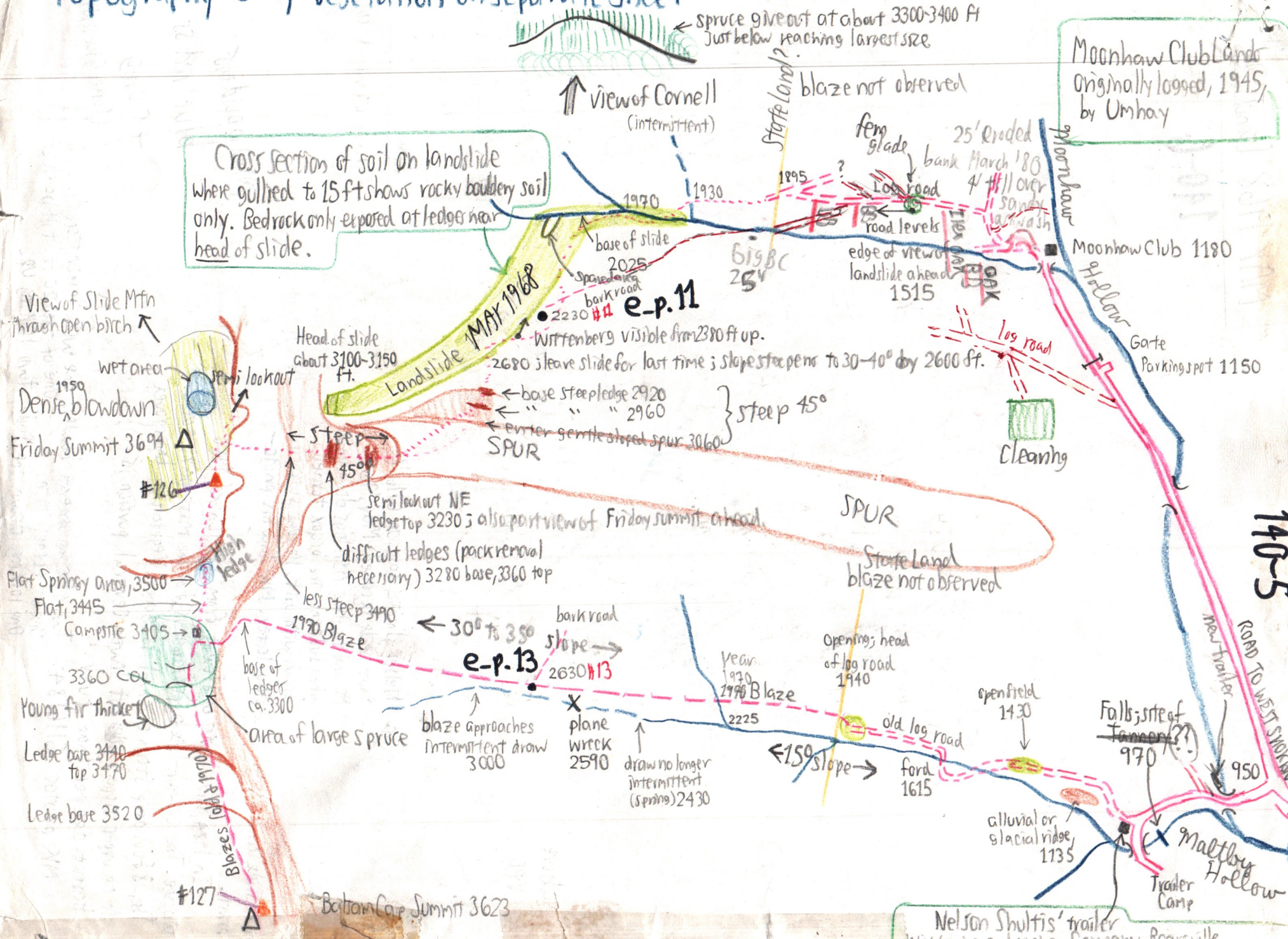


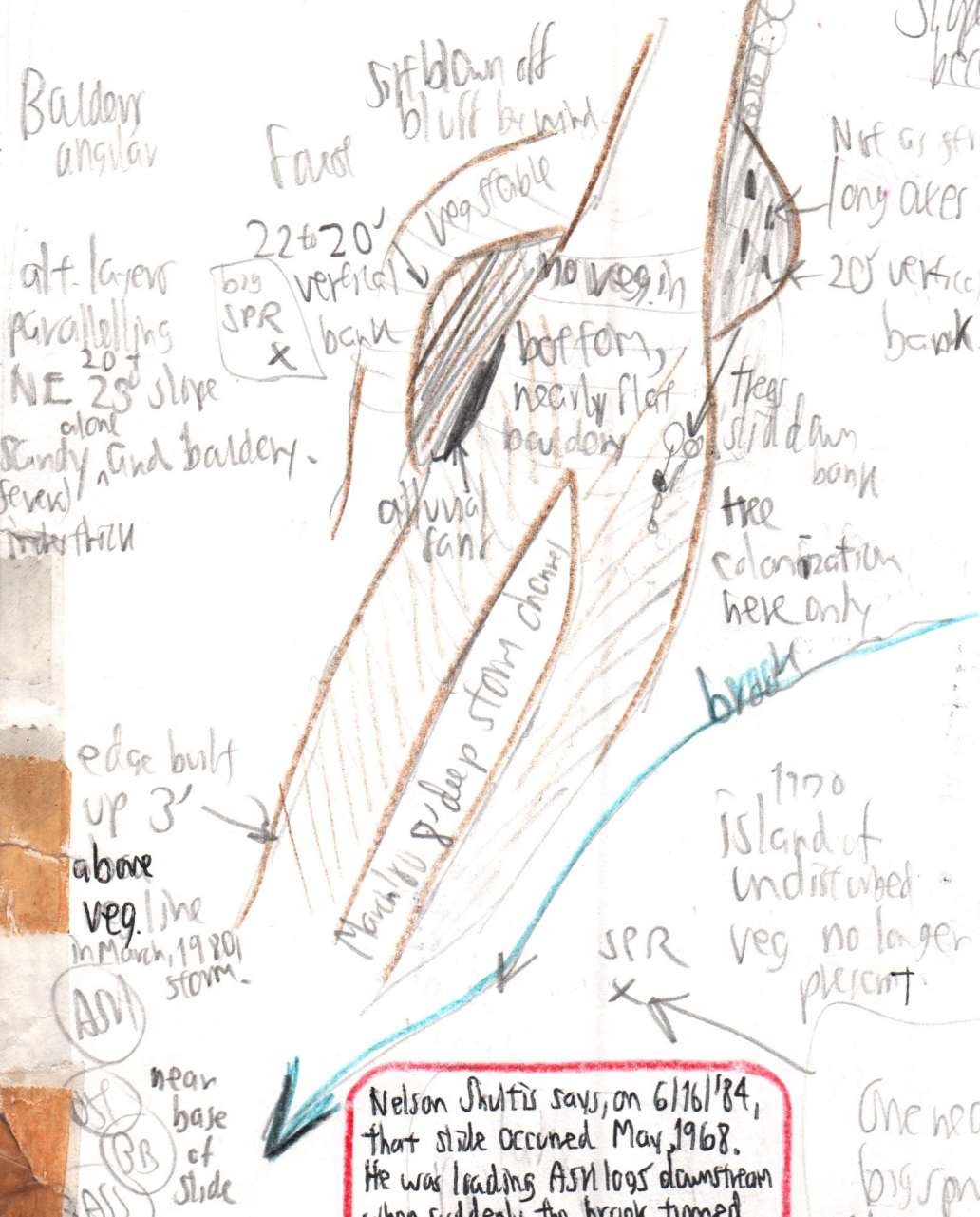
Topography Only: Vegetation on separate sheet



With Bill Kermis
Landslide on Friday 5/27/80

MAR 1968 Landslide

140-6



Slope not too steep (< 25°) because no bruch support

Not as stratified as E cut.

long axes of balders parallel to slope

Art wash or deposit from slide repeated before forest colonization? (after desiccation immediate)
No old tree trunks in deposits

Colonization:

- KB dom RM
- Poly comm & pillif
- DP RM
- MO AA
- SPR sapling/seedling
- one PB
- One hem

Pulses of wind blow down the slide as gusts.

mixed boulders:
blue & red ss
+ con g (some greenish)

One nearby big spruce N of slide & to SE

Nelson Shultz says, on 6/16/84, that slide occurred May, 1968. He was loading ASL logs downstream when suddenly the brook turned brown with silt. He was suspicious of a slide and visited it 2 days later. MK saw his photo-print.

In 1984, slide looks different from sketch of 1980 above. The outwash-like appearance is, for the most part, gone. The 8 foot deep storm channel is gone. Vegetation has moved in on upper slopes & sides but lower central portion is bare & deeper than ever.

MK photos 6/16/84: Two of conglomerate balders, one with "green stones!". One of Cornell Mtn. One of the 20 ft. till bank. One looking down the slide, two looking up.

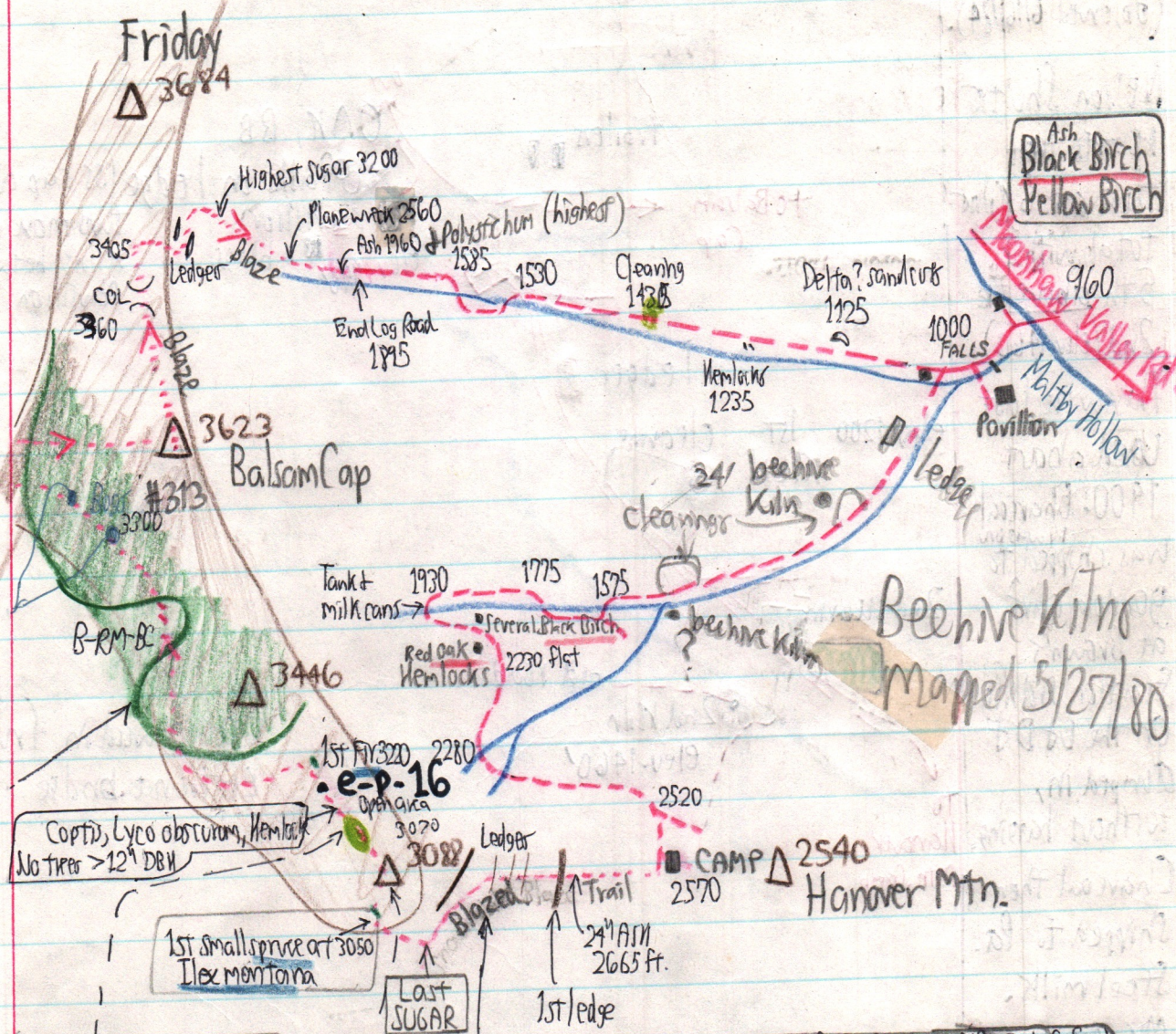
Is PB dependent on blowdown areas which are often due to spruce? **YES** - and Fir.

141-3

Could Balsam Lake + Doublecap NOT have had a blowdown long enough to eliminate PB? **Yes. Probably.**

76

↑ Probably PB never there (annotated 4/1/17)



Open Area
 Much bare rock.
 Derchampsia - Vacc ang.
 dom. with Polytrichum piliferum, Rhododendron, Vibreass, MC, 1 white Pine sapling. Surrounded by RM-BC + several spruce. Good view of 3446' spur + Balsam Cap to north, both with S-F crowns. Spruce near opening have grain taller than hdwd canopy + show signs of exposure damage on top. Absence of alines suggests a fire, but no positive proof evident. No trees exceed 12" DBH

2980 1st PB's in 35 ft high canopy of B-SUG-BC-YB+OAK (a few)

3088' Pinnacle: 20 ft canopy on conglomerate ridge, very thin soil's PB on E chest; BC dom with B-YB + OX-MC-TB-\$. Several dead hemlocks + scattered young spruces + oaks

3088' Pinnacle: 20 ft canopy on conglomerate ridge, very thin soil's PB on E chest; BC dom with B-YB + OX-MC-TB-\$. Several dead hemlocks + scattered young spruces + oaks

5/27/80 Charcoal Kiln

141-4

± 1200 ft.
1st beehive el ~~1380~~ ~~1740~~ 24" diameter, Stone to 10' high
± 1460 ft elev.

2nd beehive ~~1680~~ ~~1700~~ ; intact except top, mossy

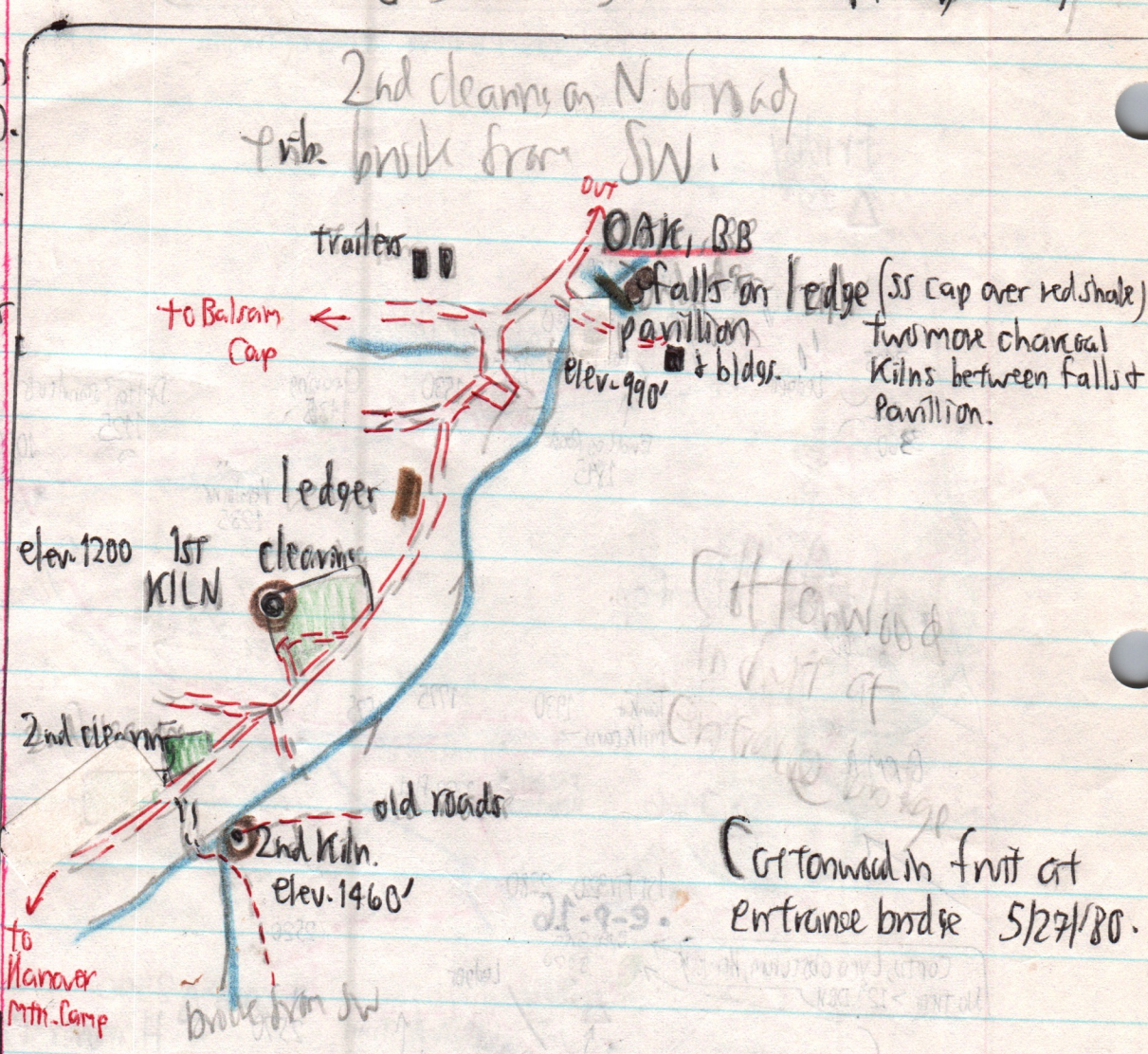
3rd & 4th Kiln
Shultz's Pavilion
(observed 6/16/84).

Nelson Shultz reports that there are 6 Kilns total, with a 5th above the 2nd (elev 1460).

They were last used about 1900. Charcoal was shipped to gondola cars at Brown's Station siding on the Ut & D & dumped in, without burning.

Charcoal then shipped to Pa. Steel mills.

MK photographed Kilns on 6/16/84.
Two of #1,
two of #2,
one



Two more charcoal Kilns between falls & pavilion.

Continued in fruit at entrance bridge 5/27/80.

Kilns photographed
6/16/84

at 3500 Club Meeting